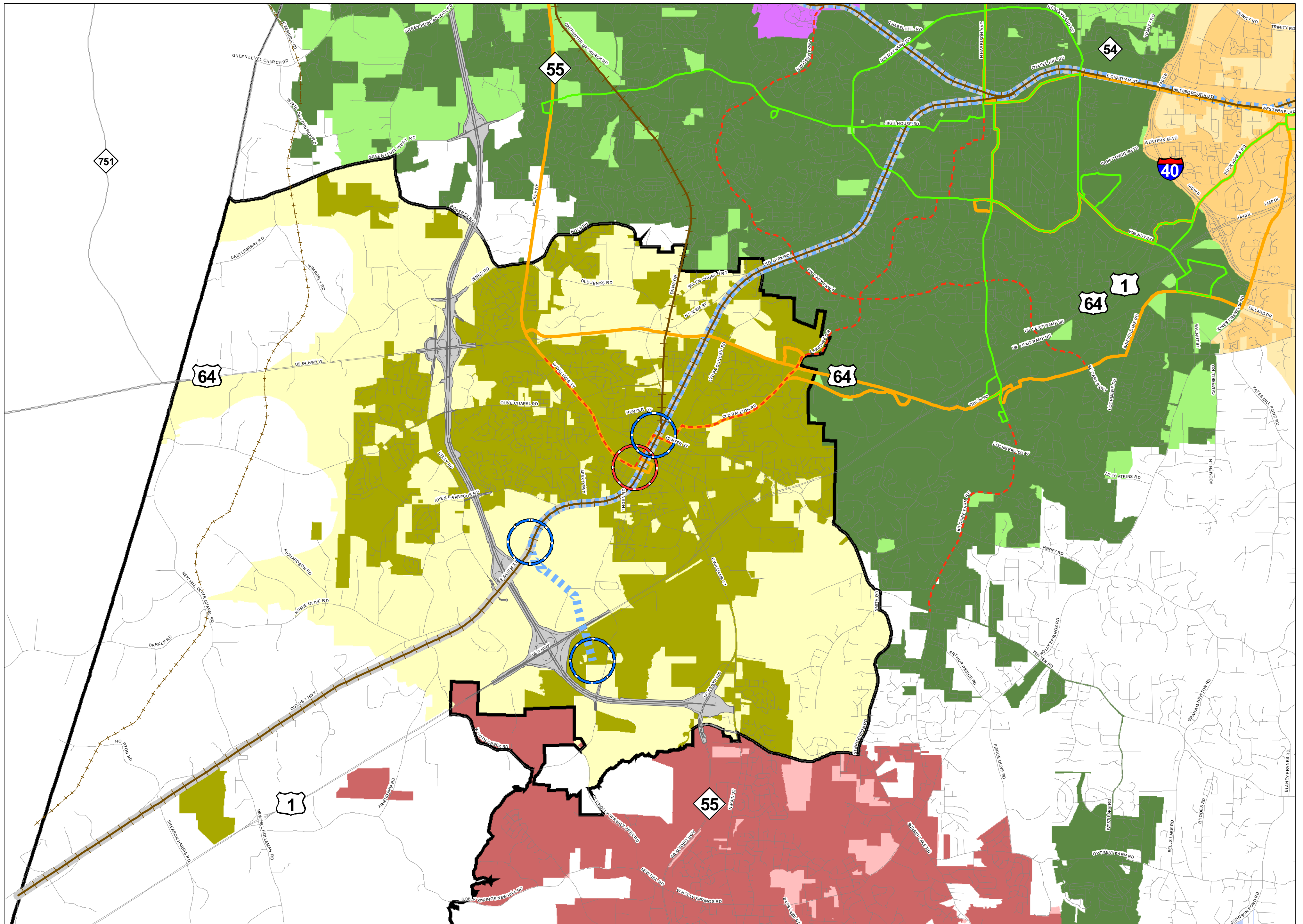


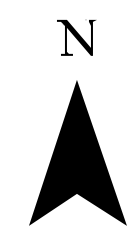


Transit Plan Apex, North Carolina



Prepared by Town of Apex Planning Department, October 2010

— Road	▭ Study Area
▬ NC 540 (Under Construction)	▭ Wake County Line
Potential Transit Center:	Municipalities:
▭ Bus	▭ Apex Corporate Limits
▭ Rail and Bus	▭ Apex Extraterritorial Jurisdiction
Transit Corridor:	▭ Cary Corporate Limits
— Existing Cary Transit Bus Corridor	▭ Cary Extraterritorial Jurisdiction
— Existing Triangle Transit Bus Corridor	▭ Holly Springs Corporate Limits
- - - Future Cary Transit Bus Corridor	▭ Holly Springs Extraterritorial Jurisdiction
- - - Former Rail Corridor, Preserved	▭ Morrisville Corporate Limits
— Existing Rail Corridor	▭ Morrisville Extraterritorial Jurisdiction
— Existing Amtrak Corridor	▭ Raleigh Corporate Limits
▬ Possible Light Rail Corridor	▭ Raleigh Extraterritorial Jurisdiction



Adopted by Town of Apex Town Council October 15, 2002
 Amended:
 March 15, 2005 October 19, 2010
 September 15, 2009

